

PORT EVERGLADES HARBOR BROWARD COUNTY, FLORIDA HYDROGRAPHIC EXAM SURVEY FY21 31, 36, 37, 42 AND 45-FOOT PROJECT

SURVEY NOTES

- REFER TO SURVEY NO. 21-233.
- ELEVATIONS ARE IN FEET AND TENTHS AND REFER TO THE NOAA REPORTED MEAN LOWER LOW WATER (MLLW) TIDAL DATUM, 1983-2001 EPOCH.
- ALL ELEVATIONS ARE BELOW THE CHART DATUM UNLESS PRECEDED BY A (+) SIGN.
- PLANE COORDINATES ARE BASED ON THE TRANSVERSE MERCATOR PROJECTION FOR THE EAST ZONE OF FLORIDA AND REFERENCED TO NORTH AMERICAN DATUM OF 1983 (NAD83), BASED ON THE NOAA NATIONAL SPATIAL REFERENCE SYSTEM (NSRS).
- ALL STATIONING REFERS TO THE CENTERLINE OF THE CHANNEL.
- THIS SURVEY WAS PERFORMED USING REAL-TIME KINEMATIC (RTK) GPS POSITIONING WITH THE FOLLOWING REFERENCE BASE LOCATION:
REFERENCE BASE LOCATED AT "USN NORTH RANGE 2 NO. 5" (PID: CS4034)
TIDE STAFF SET FROM MONUMENT "872 2957 TIDAL 2" (PID: AD5884)
- DEPTHS DEPICTED BY THIS SURVEY ARE REFERENCED TO MEAN LOWER LOW WATER (MLLW), TIDAL EPOCH 1983-2001, AS PUBLISHED BY THE NATIONAL OCEANIC AND ATMOSPHERIC ADMINISTRATION (NOAA). NOAA'S VDATUM MODEL, AND PUBLISHED TIDE STATION DATA, WERE USED TO GENERATE A HYPACK KINEMATIC TIDE DATUM (KTD) MODEL. THIS KTD MODEL, BEING A COMBINATION OF THOSE TWO SOURCES, CANNOT BE CONSIDERED EQUIVALENT TO THE VDATUM MODEL BECAUSE OF POSSIBLE ADDITIONS OR EDITS THERETO. DO NOT USE VDATUM IN PLACE OF THE KTD FILE. THE KTD MODEL USED FOR THIS SURVEY IS:
"BROWARD-MIAMIDADE-MONROE-COLLIER_2018 05 02.KTD"
TIDAL REDUCTIONS WERE OBTAINED UTILIZING REAL-TIME KINEMATIC (RTK) GPS AND REFERENCED TO MLLW UTILIZING THE KTD FILE REFERENCED ABOVE, AND CALIBRATED TO THE PUBLISHED MLLW HEIGHTS OF THE BENCHMARK ASSOCIATED WITH THE TIDE GAGE SITE PSECFIED BELOW:
NOAA TIDAL STATION 872-2957 FOR THE ENTIRE PROJECT (PID: AD5884)
- VERTICAL MEASUREMENTS WERE MADE USING A R2SONIC 2024 MULTI-BEAM SONAR SYSTEM. SOUNDINGS SHOWN ARE IN HIGH FREQUENCY.

VESSEL	DATE OF SURVEY	CUT
SV FLORIDA II SB-44	10-12 SEP 2021 20-21 OCT 2021	SP1, SP2, SP3, ENTRANCE CH., T.B. ENTRANCE CHANNEL, TURNING BASIN, SOUTHPORT CUTS, BERTHING AREAS
- AIDS TO NAVIGATION WERE LOCATED DURING THIS SURVEY.
- THE INFORMATION DEPICTED ON THIS MAP REPRESENTS THE RESULTS OF SURVEYS MADE ON THE DATES INDICATED ABOVE AND CAN ONLY BE CONSIDERED AS INDICATING THE GENERAL CONDITIONS AT THAT TIME. THIS CHART IS SOLELY FOR THE DISTRIBUTION OF AVAILABLE DEPTHS AT THE TIME OF THE SURVEY.
- SURVEY ACCURACY PERFORMANCE STANDARDS, QUALITY CONTROL, AND QUALITY ASSURANCE REQUIREMENTS WERE FOLLOWED DURING THIS SURVEY IN ACCORDANCE WITH USACE EM 1110-2-1003, HYDROGRAPHIC SURVEYING, 30 NOV 2013.

LEGEND	
	MONUMENT
	LIGHTED BEACON
	GREEN DAY BEACON
	RED DAY BEACON
	RED LIGHTED BUOY
	GREEN LIGHTED BUOY
	CAN BUOY
	NUN BUOY
	TIDE STAFF
	PROJECT DEPTH

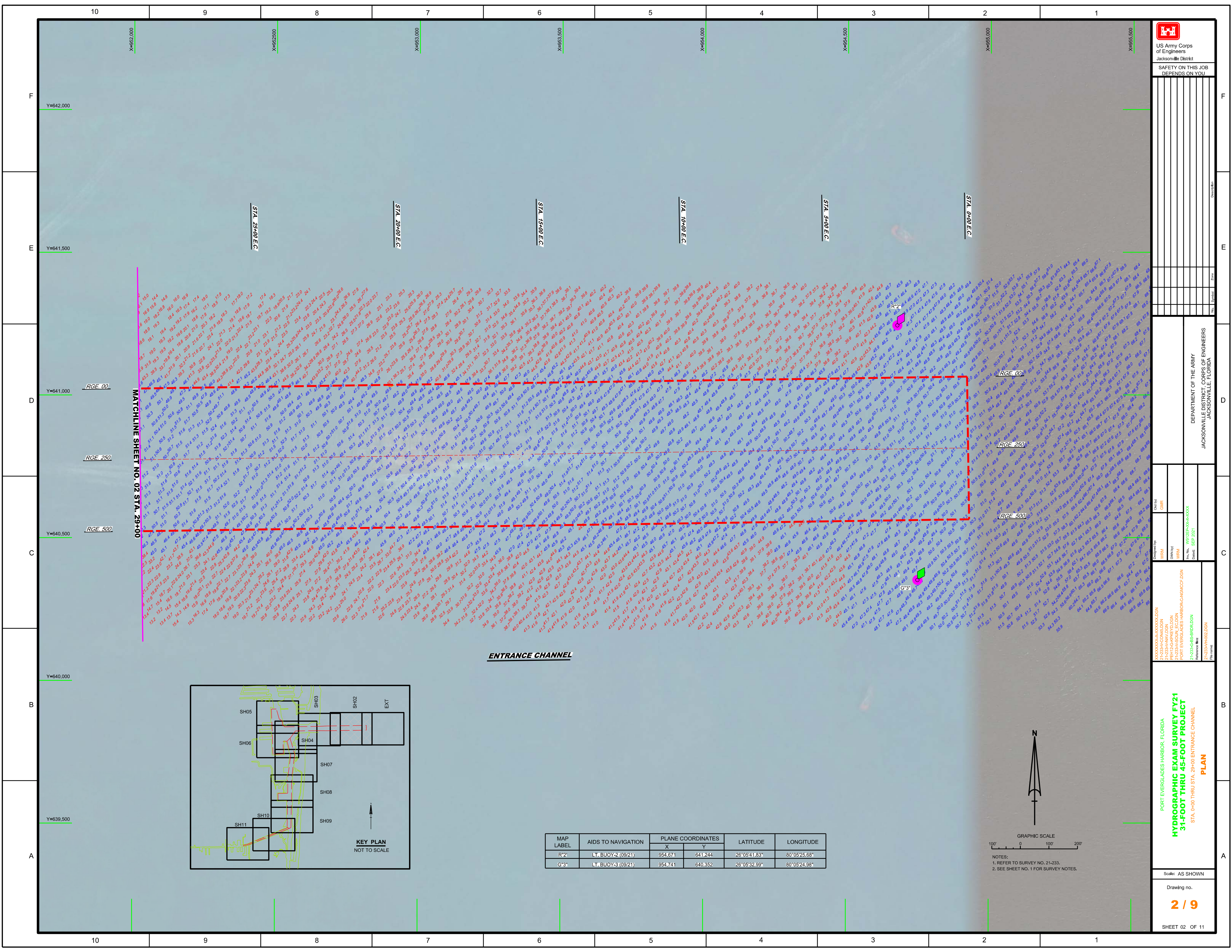
US Army Corps of Engineers
Jacksonville District
SAFETY ON THIS JOB
DEPENDS ON YOU

DESIGNED BY: WRM
DRAWN BY: WRM
CHECKED BY: WRM
DATE: SEP 2021

PROJECT: PORT EVERGLADES HARBOR-CANAL-IMPV.DGN
FILE NAME: 21-233-45-FOOT-INDEX-LOCATION-AND-VICINITY-MAP

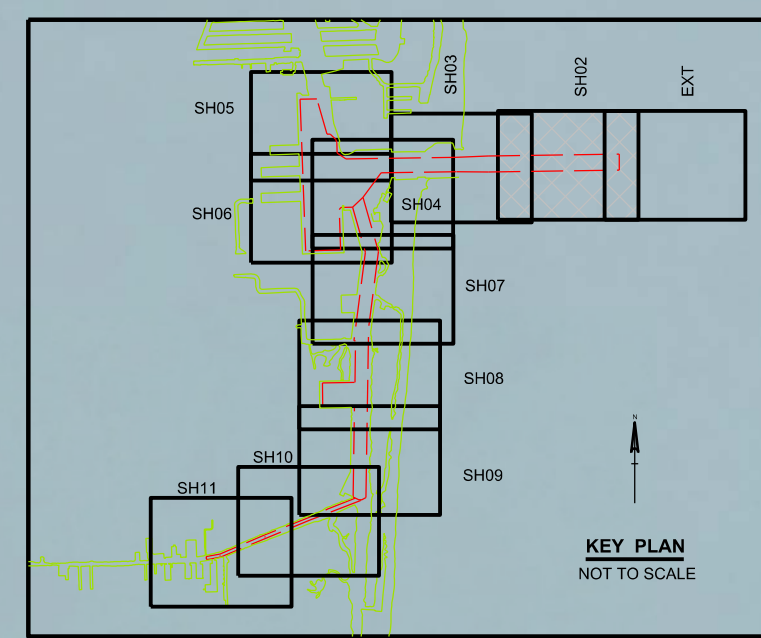
DEPARTMENT OF THE ARMY
JACKSONVILLE DISTRICT, CORPS OF ENGINEERS
JACKSONVILLE, FLORIDA

Scale: AS SHOWN
Drawing no.
1 / 9
SHEET 01 OF 11

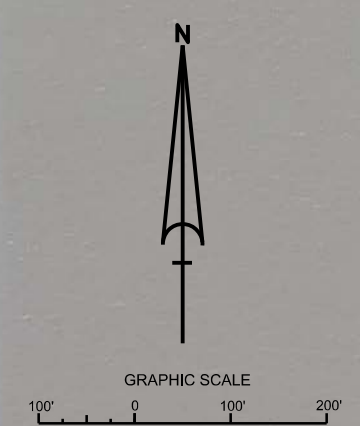


MATCHLINE SHEET NO. 02 STA. 29+00


ENTRANCE CHANNEL



MAP LABEL	AIDS TO NAVIGATION	PLANE COORDINATES		LATITUDE	LONGITUDE
		X	Y		
R*2	LT. BUOY-2 (09/21)	954.671	641.244	26°05'41.83"	80°05'25.68"
G*3	LT. BUOY-3 (09/21)	954.741	640.352	26°05'32.99"	80°05'24.98"



NOTES:
 1. REFER TO SURVEY NO. 21-233.
 2. SEE SHEET NO. 1 FOR SURVEY NOTES.



US Army Corps of Engineers
 Jacksonville District
 SAFETY ON THIS JOB
 DEPENDS ON YOU

DEPARTMENT OF THE ARMY
 JACKSONVILLE DISTRICT, CORPS OF ENGINEERS
 JACKSONVILLE, FLORIDA

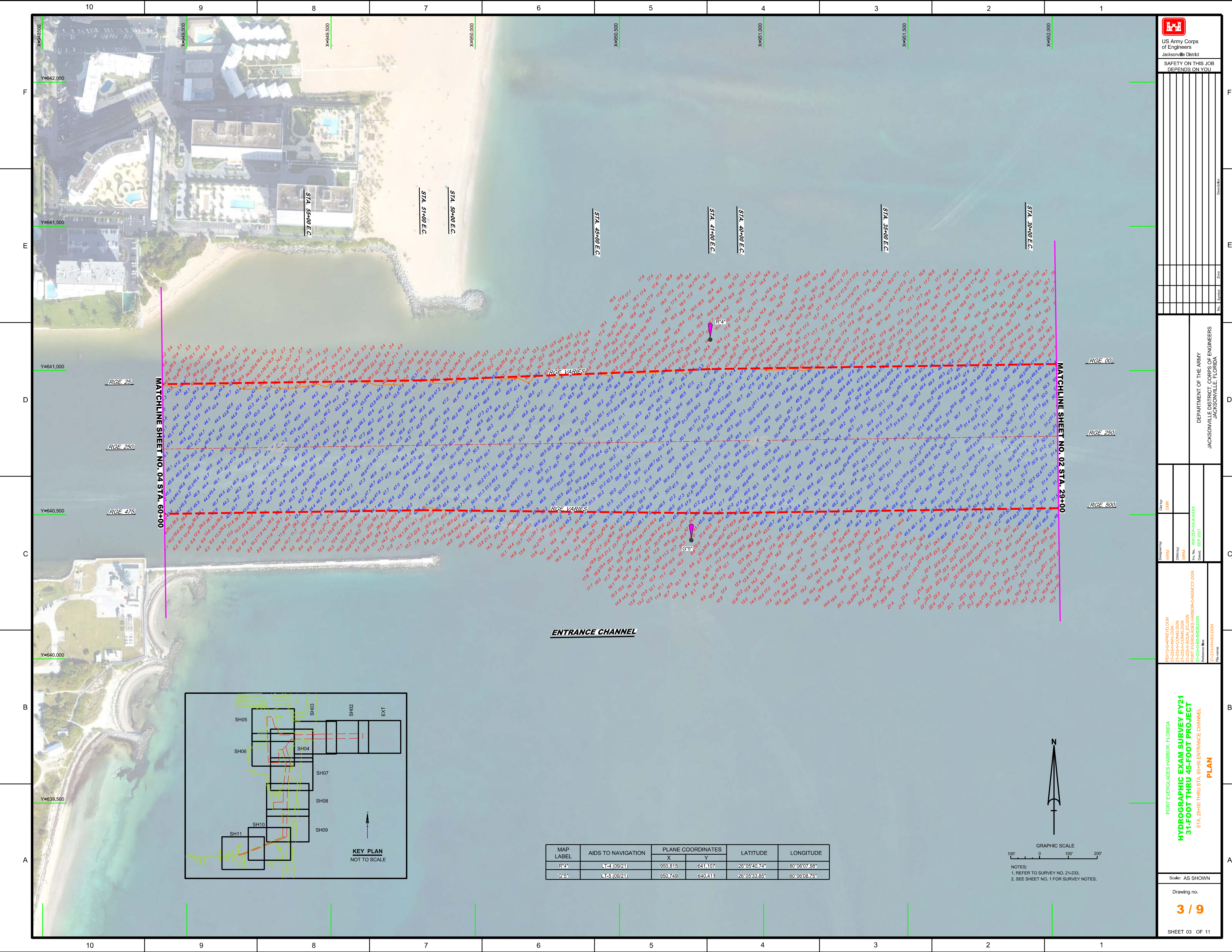
Drawn by: **WPM**
 Checked by: **WPM**
 Date: **SEP 2021**

Project: **PORT EVERGLADES HARBOR, FLORIDA**
 Drawing No: **HYDROGRAPHIC EXAM SURVEY FY21**
 Title: **31-FOOT THRU 45-FOOT PROJECT**
 Station: **STA. 0+00 THRU STA. 29+00 ENTRANCE CHANNEL**
PLAN

Scale: AS SHOWN

Drawing no. **2 / 9**

SHEET 02 OF 11



Drawn by: GHR
Checked by: GHR
Designed by: WRM
Reviewed by: WRM
Project: PORT EVERGLADES HARBOR-CC-ENG-003
Date: SEP 2021

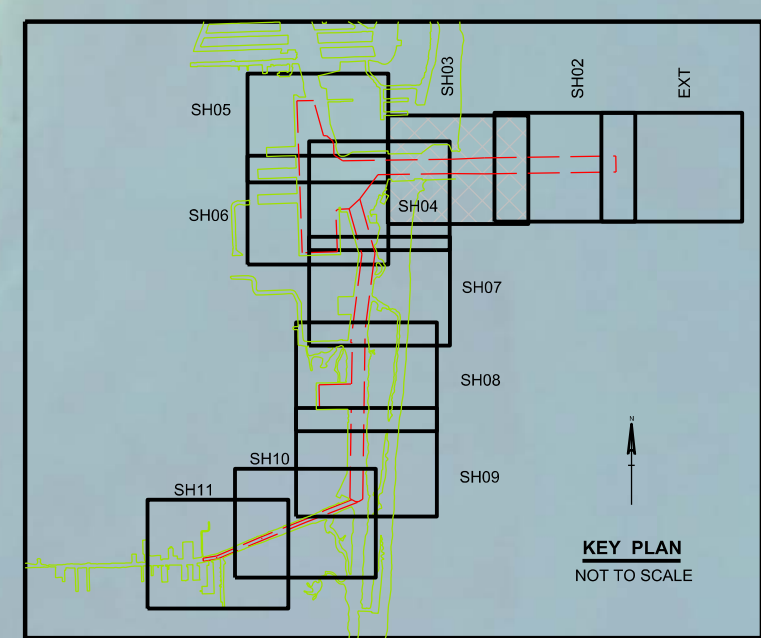
PORT EVERGLADES HARBOR, FLORIDA
HYDROGRAPHIC EXAM SURVEY FY21
31-FOOT THRU 45-FOOT PROJECT
STA. 28+00 THRU STA. 60+00 ENTRANCE CHANNEL
PLAN

Scale: AS SHOWN
Drawing no.
3 / 9
SHEET 03 OF 11

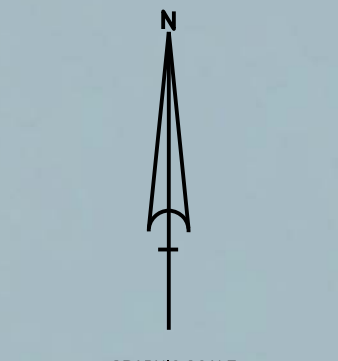
RGE. 00
RGE. 250
RGE. 500

MATCHLINE SHEET NO. 04 STA. 60+00
MATCHLINE SHEET NO. 02 STA. 29+00

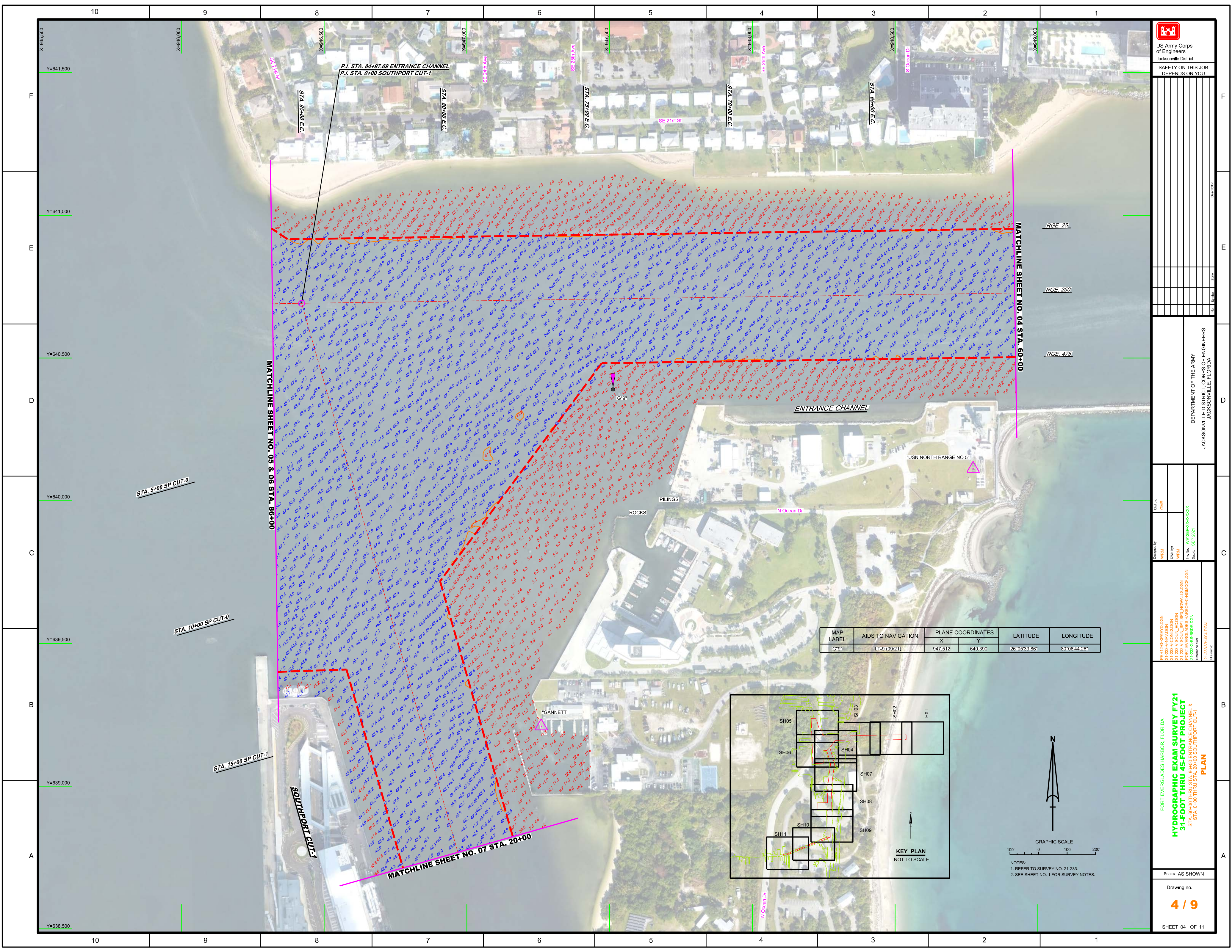
ENTRANCE CHANNEL



MAP LABEL	AIDS TO NAVIGATION	PLANE COORDINATES		LATITUDE	LONGITUDE
		X	Y		
R*4	LT-4 (09/21)	950.815	641.107	26°05'40.74"	80°06'07.98"
G*5	LT-5 (09/21)	950.749	640.411	26°05'33.85"	80°06'08.75"



NOTES:
1. REFER TO SURVEY NO. 21-233.
2. SEE SHEET NO. 1 FOR SURVEY NOTES.



P.I. STA. 84+97.69 ENTRANCE CHANNEL
P.I. STA. 0+00 SOUTHPORT CUT-1

MATCHLINE SHEET NO. 05 & 06 STA. 86+00

MATCHLINE SHEET NO. 04 STA. 60+00

STA. 5+00 SP CUT-0

STA. 10+00 SP CUT-0

STA. 15+00 SP CUT-1

SOUTHPORT CUT-1

MATCHLINE SHEET NO. 07 STA. 20+00

ENTRANCE CHANNEL

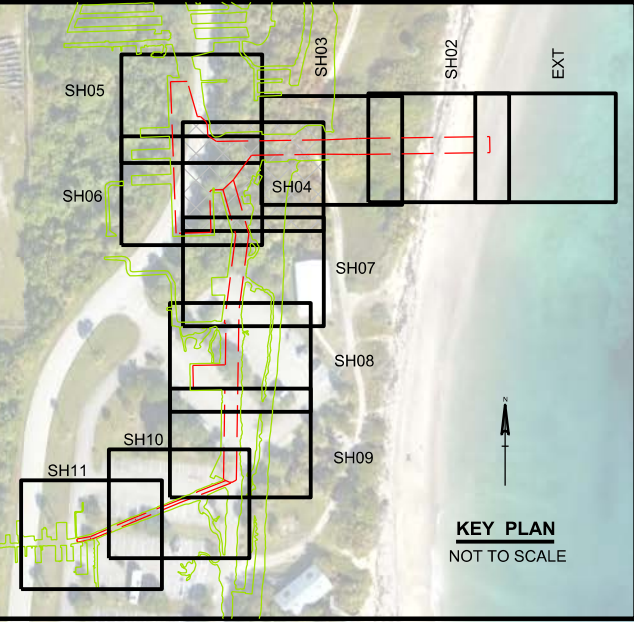
USN NORTH RANGE NO 5

ROCKS

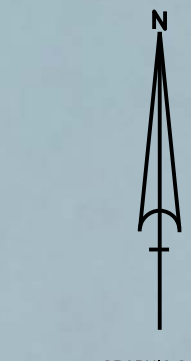
PILINGS

N Ocean Dr

GANNETT



MAP LABEL	AIDS TO NAVIGATION	PLANE COORDINATES		LATITUDE	LONGITUDE
		X	Y		
G*9	LT-9 (09/21)	947.512	640.390	26°05'33.86"	80°06'44.26"



NOTES:
1. REFER TO SURVEY NO. 21-233.
2. SEE SHEET NO. 1 FOR SURVEY NOTES.

US Army Corps of Engineers
Jacksonville District

SAFETY ON THIS JOB
DEPENDS ON YOU

--	--	--	--	--

DEPARTMENT OF THE ARMY
JACKSONVILLE DISTRICT, CORPS OF ENGINEERS
JACKSONVILLE, FLORIDA

<p>Designed by: WRM</p>	<p>Checked by: GHR</p>	<p>Drawn by: WRM</p>	<p>Reviewed by: WRM</p>	<p>Project No.: WR2125A-000-0000</p>
-----------------------------	----------------------------	--------------------------	-----------------------------	--

PORT EVERGLADES HARBOR, FLORIDA
HYDROGRAPHIC EXAM SURVEY FY21
31-FOOT THRU 45-FOOT PROJECT
STA. 60+00 THRU STA. 86+00 ENTRANCE CHANNEL &
STA. 0+00 THRU STA. 20+00 SOUTHPORT CUT-1
PLAN

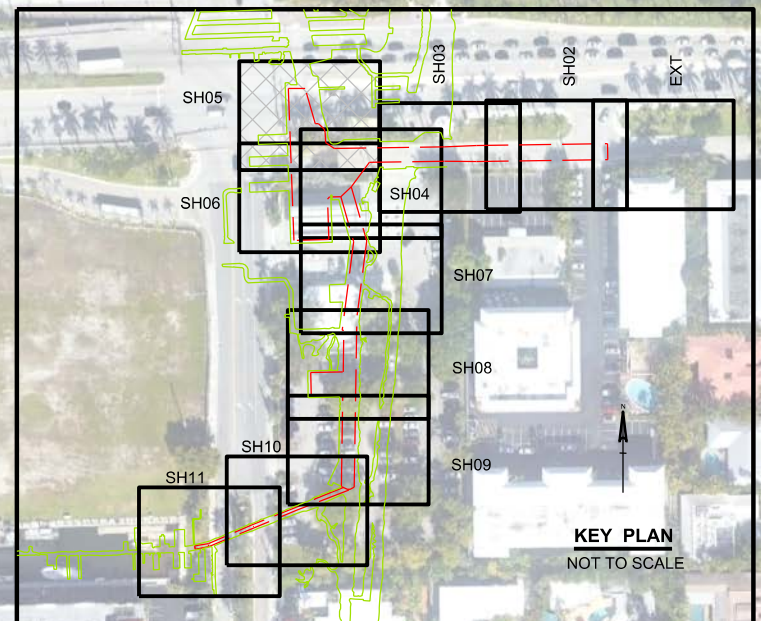
Scale: AS SHOWN

Drawing no.
4 / 9

SHEET 04 OF 11

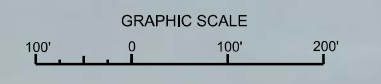


MAP LABEL	AIDS TO NAVIGATION	PLANE COORDINATES		LATITUDE	LONGITUDE
		X	Y		
G*29"	LT-29 (09/21)	945,870	641,784	26°05'47.77"	80°07'02.16"
R*30"	LT. BUOY-30 (09/21)	945,777	641,739	26°05'47.34"	80°07'03.18"




MATCHLINE SHEET NO. 06 RGE. 250

MATCHLINE SHEET NO. 04 STA. 86+00



NOTES:
 1. REFER TO SURVEY NO. 21-233.
 2. SEE SHEET NO. 1 FOR SURVEY NOTES.



US Army Corps of Engineers
 Jacksonville District

SAFETY ON THIS JOB
 DEPENDS ON YOU

DEPARTMENT OF THE ARMY
 JACKSONVILLE DISTRICT, CORPS OF ENGINEERS
 JACKSONVILLE, FLORIDA

Drawn by: **WRM**
 Checked by: **GHR**

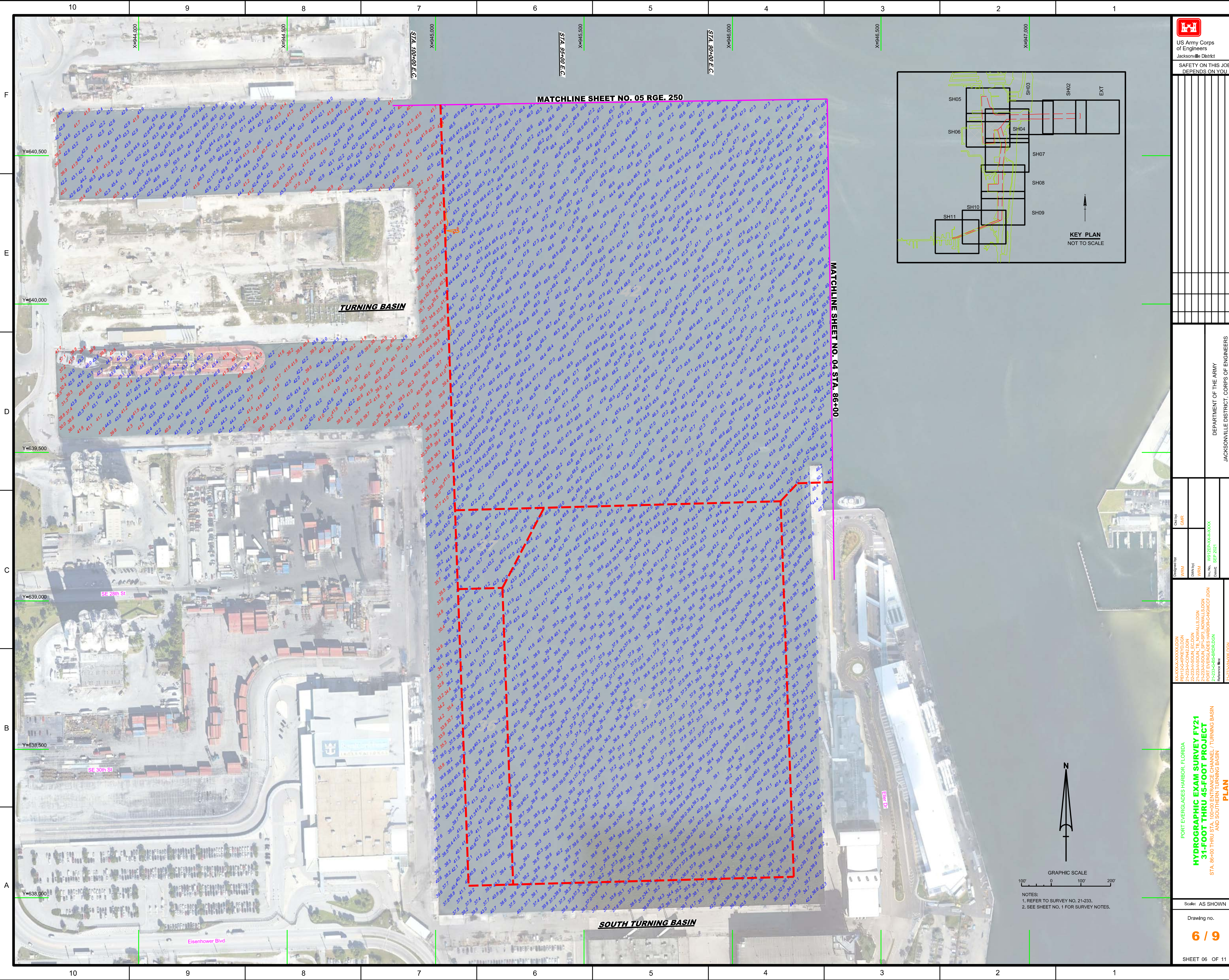
Designed by: **WRM**
 Date: **SEP 2021**

Project: **PORT EVERGLADES HARBOR EXAM SURVEY FY21**
 Title: **31-FOOT THRU 45-FOOT PROJECT**
 Station: **STA. 86+00 THRU STA. 100+00 ENTRANCE CHANNEL TURNING BASIN**

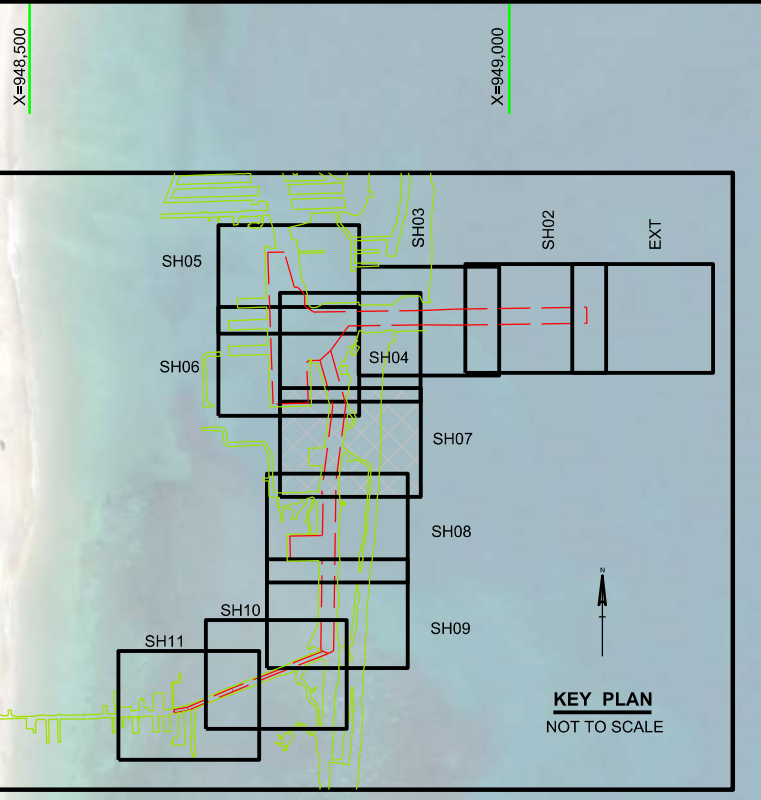
Scale: AS SHOWN

Drawing No. **5 / 9**

SHEET 05 OF 11



<p>US Army Corps of Engineers Jacksonville District</p>	
<p>SAFETY ON THIS JOB DEPENDS ON YOU</p>	
<p>Drawn By: [Blank]</p>	<p>Checked By: [Blank]</p>
<p>Designed By: [Blank]</p>	<p>Reviewed By: [Blank]</p>
<p>Created: [Blank]</p>	<p>Revised: [Blank]</p>
<p>Project: [Blank]</p>	<p>Scale: AS SHOWN</p>
<p>Client: GHR</p>	<p>Department of the Army Jacksonville District, Florida</p>
<p>Drawn: WRM</p>	<p>Project: PORT EVERGLADES EXAM SURVEY FY21</p>
<p>Checked: WRM</p>	<p>Project: 31-FOOT THRU 45-FOOT PROJECT</p>
<p>Reviewed: WRM</p>	<p>Project: STA. 08+00 THRU STA. 100+00 ENTRANCE CHANNEL / TURNING BASIN AND SOUTHERN TURNING BASIN</p>
<p>Approved: WRM</p>	<p>Project: PLAN</p>
<p>Date: SEP 2021</p>	<p>Scale: AS SHOWN</p>
<p>Project: PORT EVERGLADES EXAM SURVEY FY21</p>	<p>Sheet: 6 / 9</p>
<p>Project: 31-FOOT THRU 45-FOOT PROJECT</p>	<p>Sheet: SHEET 06 OF 11</p>



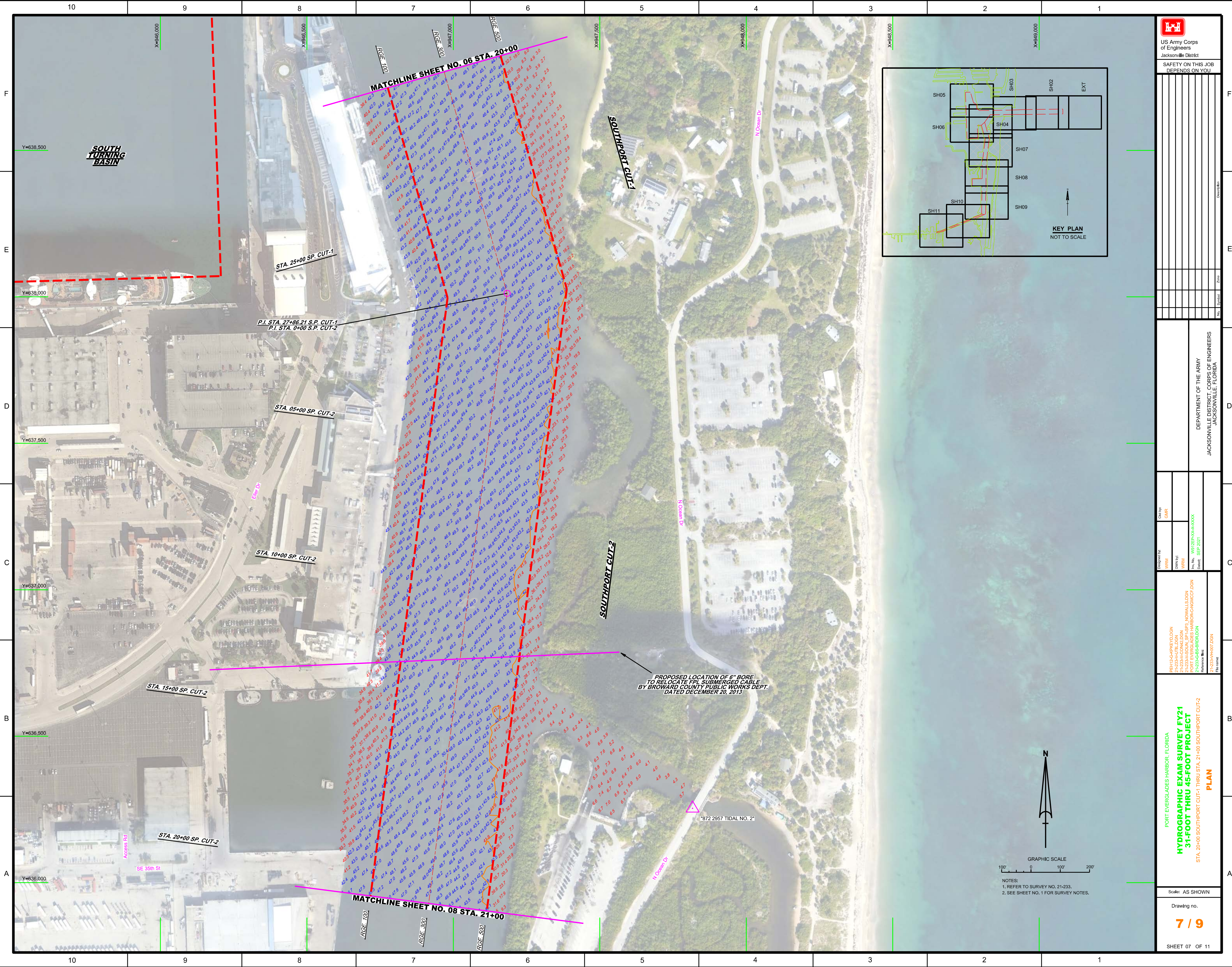
US Army Corps of Engineers
 Jacksonville District
 SAFETY ON THIS JOB
 DEPENDS ON YOU

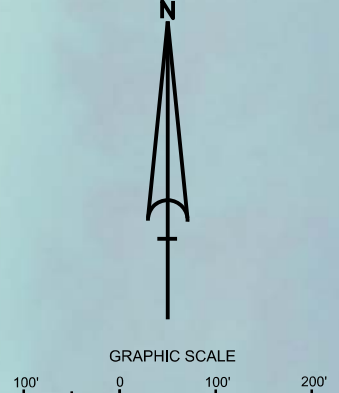
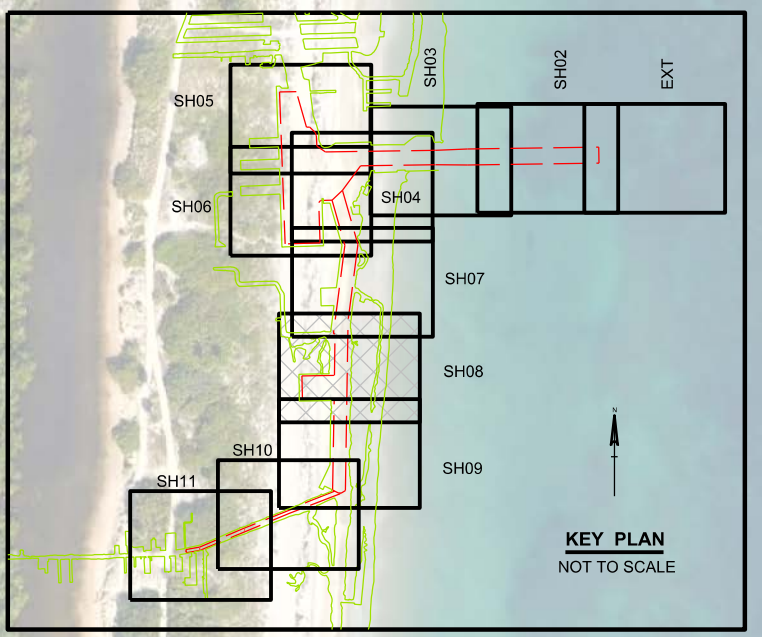
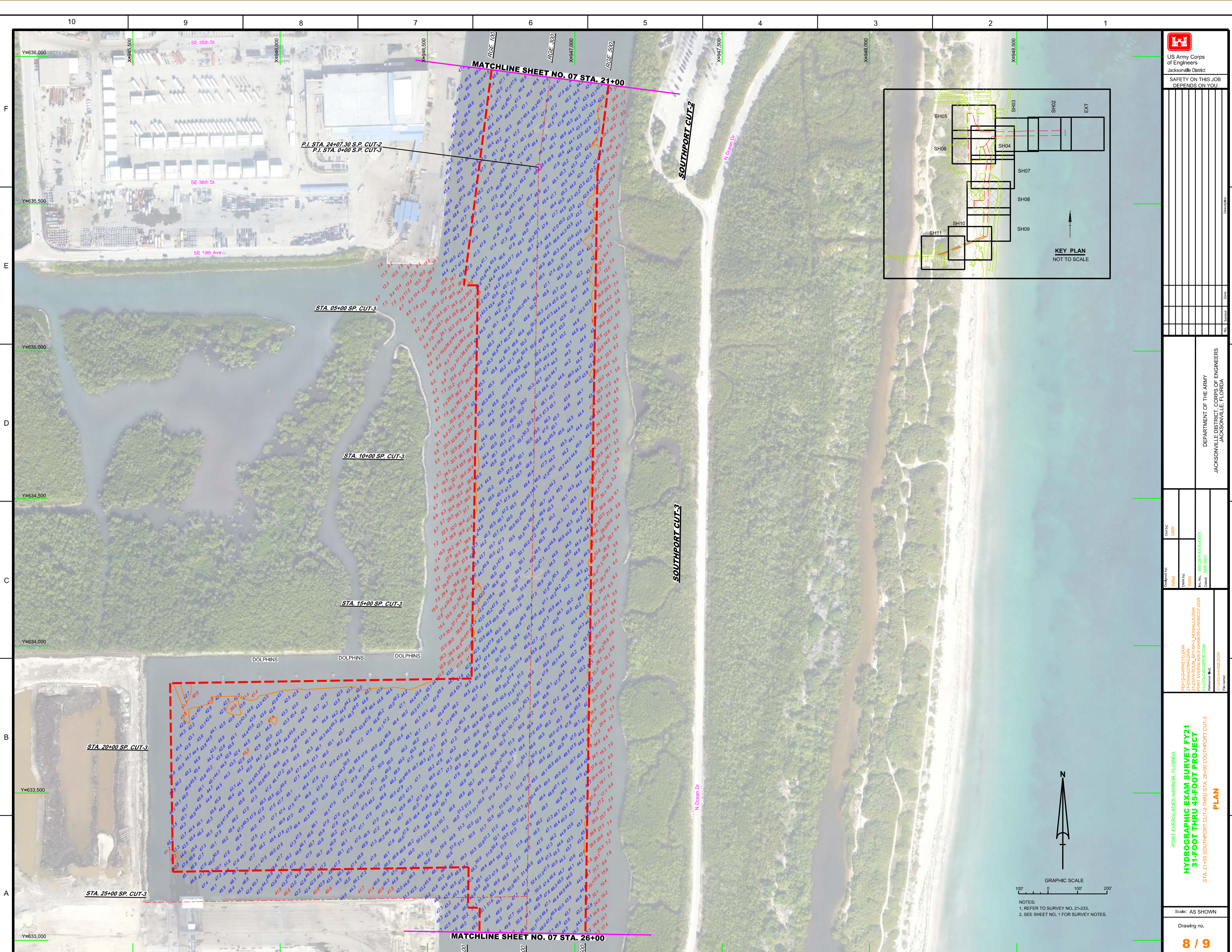
Checked by:	CHW
Designed by:	WRM
DRAWN BY:	WRM
DATE:	SEP 2021

PORT EVERGLADES HARBOR, FLORIDA
HYDROGRAPHIC EXAM SURVEY FY21
31-FOOT THRU 45-FOOT PROJECT
 STA. 20+00 SOUTHPORT CUT-1 THRU STA. 21+00 SOUTHPORT CUT-2
PLAN

Scale: AS SHOWN
 Drawing no. **7 / 9**
 SHEET 07 OF 11

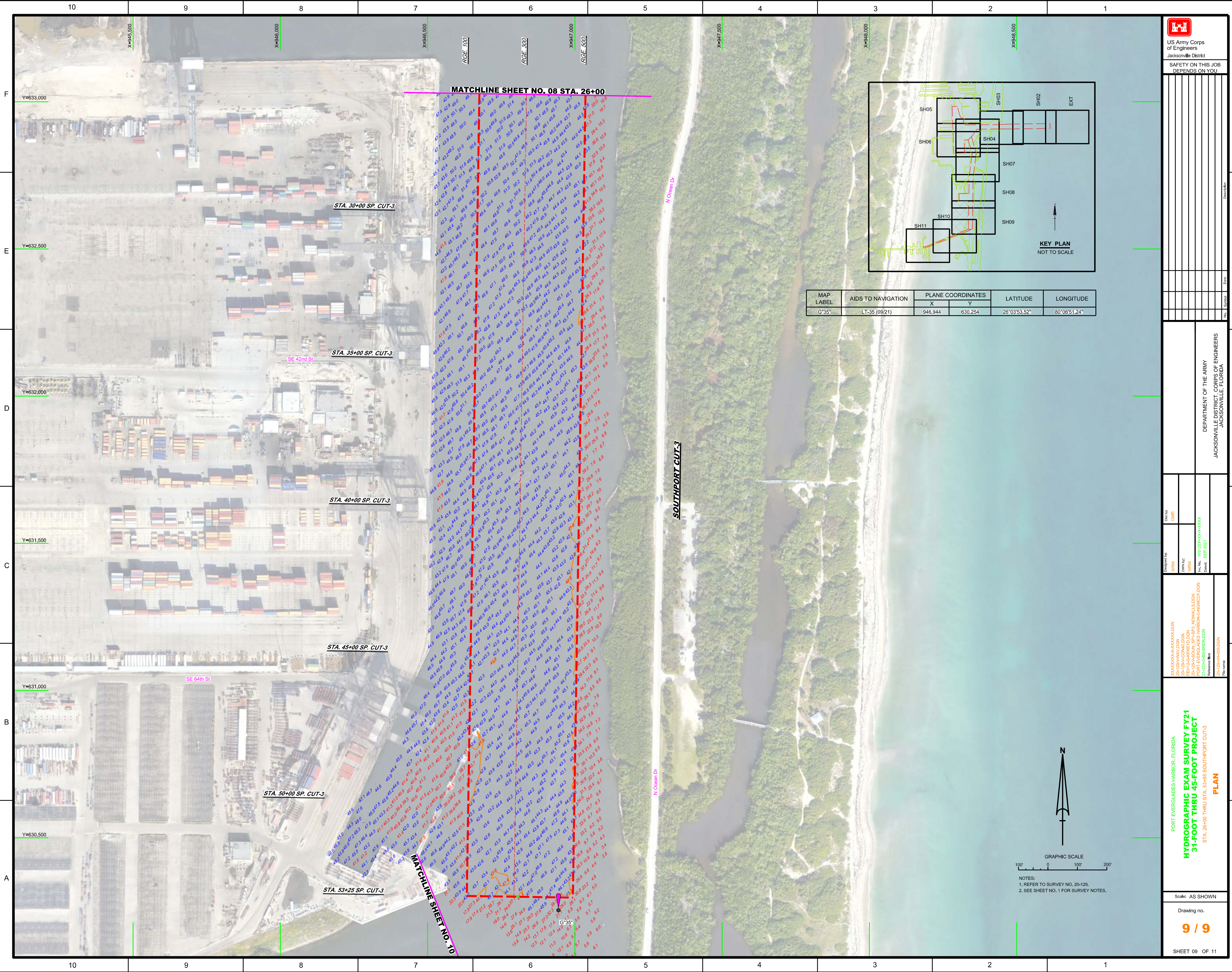
DEPARTMENT OF THE ARMY
 JACKSONVILLE DISTRICT, CORPS OF ENGINEERS
 JACKSONVILLE, FLORIDA





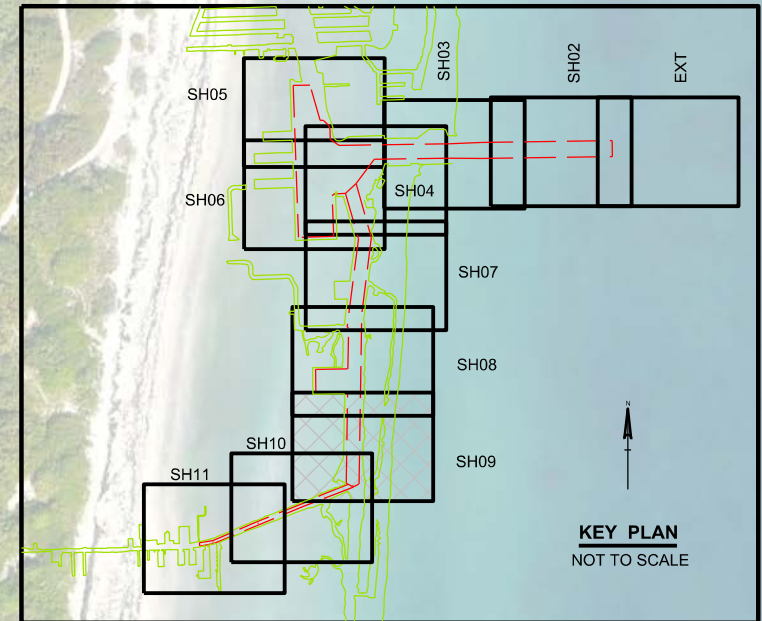
NOTES:
 1. REFER TO SURVEY NO. 21-233.
 2. SEE SHEET NO. 1 FOR SURVEY NOTES.

		US Army Corps of Engineers Jacksonville District	
SAFETY ON THIS JOB DEPENDS ON YOU			
Date: 08R		Design: WRM/BRW Date: SEP 2021	
Client: GARR		Project: PORT EVERGLADES HARBOR, FLORIDA 21-233-06-06-000A	
Drawn by: WRM/BRW		Checked by: WRM/BRW	
Title: 21-233-06-06-000A		Date: SEP 2021	
DEPARTMENT OF THE ARMY JACKSONVILLE DISTRICT, CORPS OF ENGINEERS JACKSONVILLE, FLORIDA			
PORT EVERGLADES HARBOR, FLORIDA HYDROGRAPHIC EXAM SURVEY FY21 34-FOOT THRU 45-FOOT PROJECT STA. 21+00 SOUTHPORT CUT-2 THRU STA. 26+00 SOUTHPORT CUT-3 PLAN			
Scale: AS SHOWN			
Drawing no. 8 / 9			
SHEET 08 OF 11			

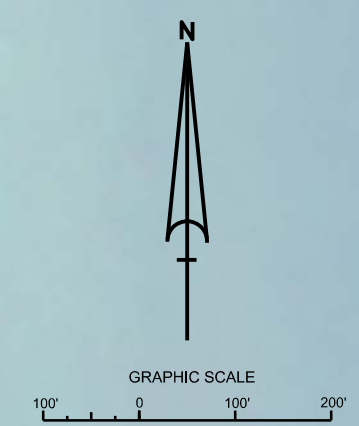


MATCHLINE SHEET NO. 08 STA. 26+00


MATCHLINE SHEET NO. 10



MAP LABEL	AIDS TO NAVIGATION	PLANE COORDINATES		LATITUDE	LONGITUDE
		X	Y		
G-35	LT-35 (09/21)	946,944	630,254	26°03'53.52"	80°06'51.24"



NOTES:
 1. REFER TO SURVEY NO. 20-128.
 2. SEE SHEET NO. 1 FOR SURVEY NOTES.

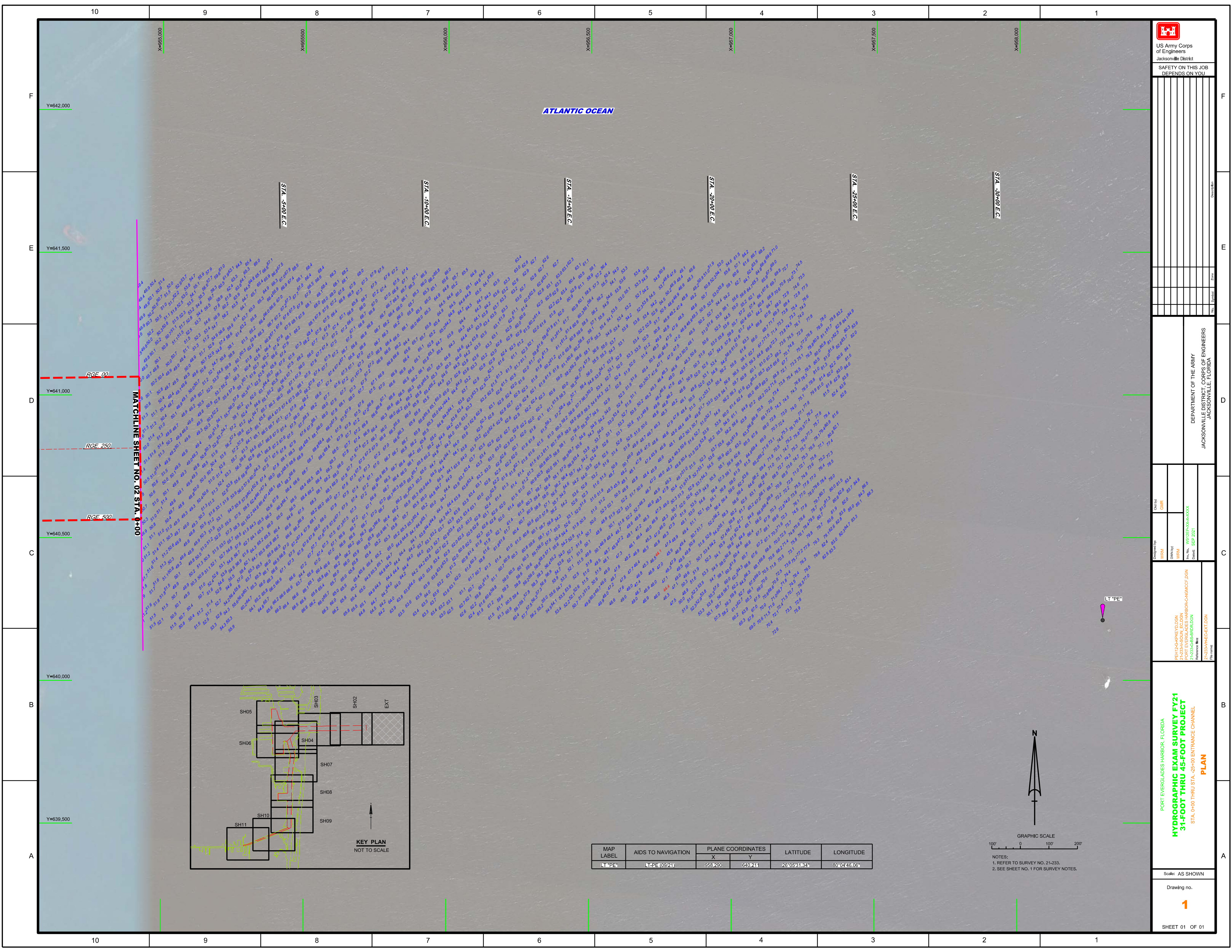


US Army Corps of Engineers
 Jacksonville District
 SAFETY ON THIS JOB
 DEPENDS ON YOU

PORT EVERGLADES HARBOR, FLORIDA
**HYDROGRAPHIC EXAM SURVEY FY21
 31-FOOT THRU 45-FOOT PROJECT**
 STA. 26+00 THRU STA. 53+66 SOUTHPORT CUT-3
PLAN

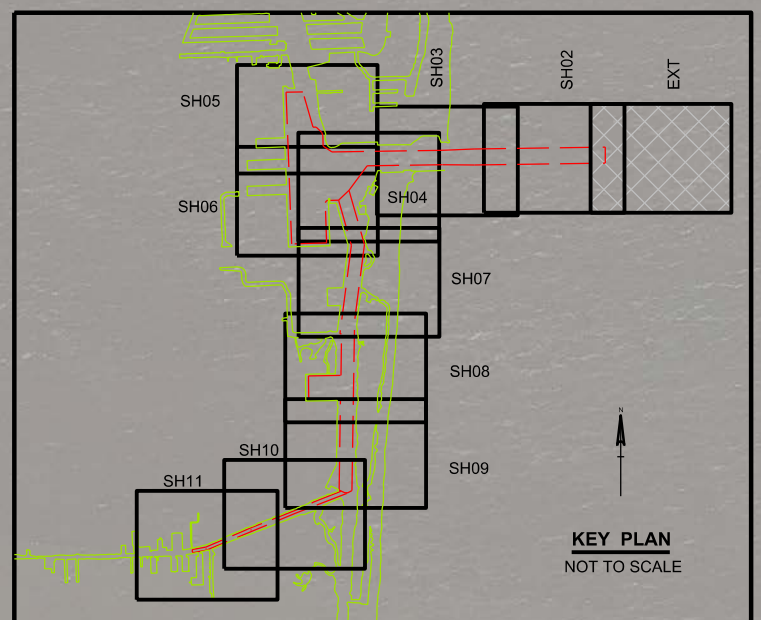
Scale: AS SHOWN
 Drawing no.
9 / 9

SHEET 09 OF 11

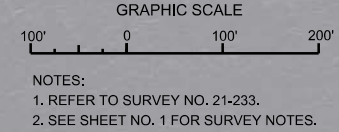


ATLANTIC OCEAN

MATCHLINE SHEET NO. 02 STA. 0+00



MAP LABEL	AIDS TO NAVIGATION	PLANE COORDINATES		LATITUDE	LONGITUDE
		X	Y		
LT *PE*	LTPE (09/21)	958290	640241	26°09'31.34"	80°04'46.06"



DEPARTMENT OF THE ARMY
JACKSONVILLE DISTRICT, CORPS OF ENGINEERS
JACKSONVILLE, FLORIDA

PORT EVERGLADES HARBOR, FLORIDA
HYDROGRAPHIC EXAM SURVEY FY21
31-FOOT THRU STA. -25+00 ENTRANCE CHANNEL
PLAN

Scale: AS SHOWN
Drawing no. **1**
SHEET 01 OF 01